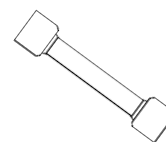


Butt Connectors

Vinyl Insulated

Wire Range	Qty/ Pkg	Item Number
8 8 mm ²	2	230130
	25	210130
	100	222130
6 13 mm ²	1	230140
	25	210140
	100	222140
4 21 mm ²	1	230150
	25	210150
	100	222150

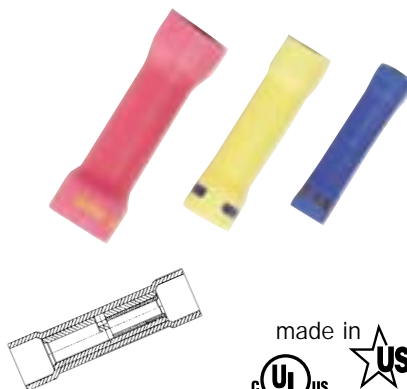


made in

Step-Down Butt Connectors

Vinyl Insulated

Wire Range	Qty/ Pkg	Item Number
16 - 14 to 22 - 18 1-2 mm ² to 0.3-0.8 mm ²	3	230164
	25	210164
	100	220164
12 - 10 to 16 - 14 3.5 mm ² to 1-2 mm ²	3	230165
	25	210165
	100	220165
8 to 12 - 10 8 mm ² to 3-5 mm ²	3	230166
	25	210166
	100	220166



made in

Step-Down Butt Connectors are used to join a pair of conductors to a third, all of the same size or two conductors of different sizes.

The smaller end is banded with the color code of the smaller or single conductor.

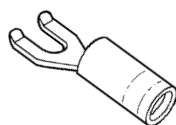
Flanged Spades Nylon Insulated with Insulation Grip (Funnel Entry)

ABYC Recommends

“Ring and captive-spade type terminal connectors should be the same nominal size as the stud. Twist-on connectors (wire nuts) shall not be used.”
E-8.15.16-8.15.18.

Wire Range	Screw Size	Qty/ Pkg	Item Number	
22 - 18 0.3-0.8 mm ²	6 3.6 mm	6	230301	
		25	210301	
		100	220301	
	8 4 mm	6 3.6 mm	6	230302
			25	210302
			100	220302
	10 4.8 mm	6 3.6 mm	6	230303
			25	210303
			100	220303
	16 - 14 1-2 mm ²	6 3.6 mm	6	230311
			25	210311
			100	220311
8 4 mm		6 3.6 mm	6	230312
			25	210312
			100	220312

Wire Range	Screw Size	Qty/ Pkg	Item Number
16 - 14 1-2 mm ²	10 4.8 mm	6	230313
		25	210313
		100	220313
		500	222313
12 - 10 3-5 mm ²	6 3.6 mm	5	230321
		25	210321
		100	220321
		500	222321
8 4 mm	6 3.6 mm	5	230322
		25	210322
		100	220322
		500	222322
10 4.8 mm	6 3.6 mm	5	230323
		25	210323
		100	220323
		500	222323



made in

